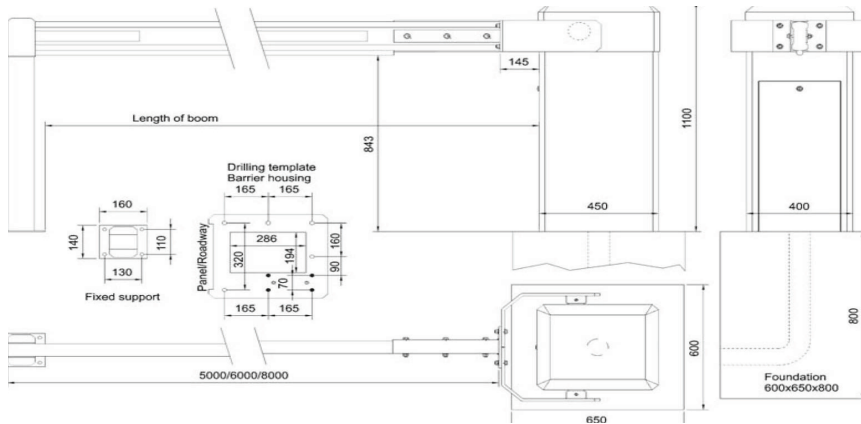




ES 50-80 Automatic Rising Arm Barrier

5.0, 6.0 and 8.0 meters

Aluminium



The AUTOPA ES50 - ES80 range of Automatic Rising Arm Barriers are suitable for road widths between 5.0m and 8.0m. These highly reliable, aluminium, powder coated case with a 10 year warranty against rust perforation and a 100% duty cycle, meaning they are suitable for the most demanding constant use applications.

The design of the ES50 - ES80 barriers incorporates a number of features to ensure safety, longevity and low running costs; the mechanical design incorporates shearing points to protect the mechanical components against damage should the arm be forced, ensuring the barrier can be easily and cost-effectively repaired.

The AUTOPA Automatic Rising Arm Barriers ES50- ES80 are ideal for use at the entrance to company premises, car parks, parking garages or safety areas and are suitable for use in conjunction with a complete range of access control equipment.



Part Number	Description	Weight (kg)
138 105 151	5.0 meter ES Series Automatic Arm Barrier (boom included)	110.0kg
138 105 161	6.0 meter ES Series Automatic Arm Barrier (boom included)	115.0kg
138 105 181	8.0 meter ES Series Automatic Arm Barrier (boom included)	118.0kg
138 601 150	Skirt for ES Barrier (750mm below arm, per metre)	
138 601 215	Double Height Skirt for ES Barrier (750mm above and below arm per metre)	
138 106 151	Magnetic Lock Catch Post	
138 105 933	Catch Post	

Product details

- 400mm x 450mm x 1,100mm (length x width x height)
- 230V / 50Hz, 2.5A. (Power Requirements)
- 4-8 second operating speed (dependant on boom length)
- -10°C to +70°C (Operating Temperature Range)

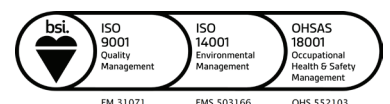
Installation & use

All Automatic Rising Arm Barrier Systems require installation by experienced and trained personnel. The Barrier cabinet requires bolting to a suitable concrete foundation (no less than 800mm deep, 650mm width and 650mm length. Provision for control and power cabling should be made through plastic ducting. This product is guaranteed for 12 months (if installed and used correctly).



www.autopa.co.uk
+44 (0)1788 550556

AUTOPA Limited
Cottage Leap, Rugby, Warwickshire CV21 3XP



FM 31071 EMS 503166 OHS 552103