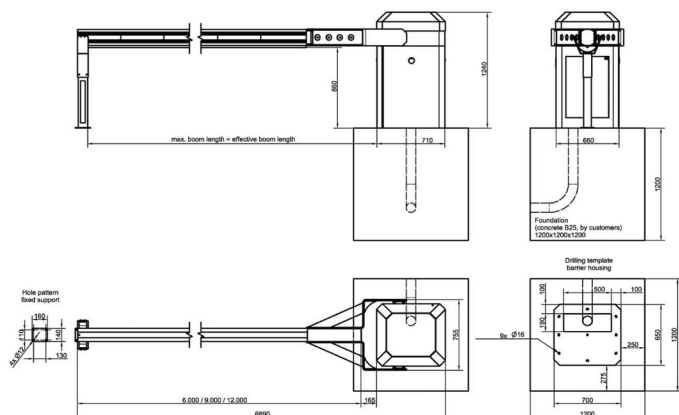




KOLOSS Automatic Rising Arm Barrier

6.0, 9.0 and 12.0 meters

Aluminium



The heavy duty KOLOSS Automatic Arm Barrier is the biggest system in AUTOPA range, with booms available up to 12m in length. It is built to control access for industrial areas and other wide driveways and entrances.

The KOLOSS Automatic Arm Barrier is compatible with a variety of different control mechanisms including remote controls, keypads and swipe cards. Manufactured from high quality aluminium, this system has an IP44 protection rating, which gives the system a long lifespan and shows how cost effective the system is.

Manual Override Handles are included in case of power failure or for manual operation. Additional Manual Override Switches can be added to programme the barrier allowing it to remain in the open or closed positions. Suspension cables are included to ensure that the boom does not sway in high wind speeds.



Part Number	Description	Weight (kg)
138 105 060	6.0 meter KOLOSS Series Automatic Rising Arm Barrier (boom included)	415.0kg
138 105 070	9.0 meter KOLOSS Series Automatic Rising Arm Barrier (boom included)	430.0kg
138 105 080	12.0 meter KOLOSS Series Automatic Rising Arm Barrier (boom included)	465.0kg
138 106 151	Magnetic lock Catch Post	
138 105 933	Catch post	

Product details

- 720mm x 656mm x 1250mm (length x width x height)
- Standard colour Blue (RAL 7012) and white (RAL 9010)
- Power supply 230V/50Hz or 115V/60Hz
- 6.0-12.0 seconds operating speeds (dependent on boom length)

Installation & use

All Automatic Rising Arm Barrier Systems must only be installed by experienced and trained personnel. The barrier cabinet requires bolting to a suitable concrete foundation (no less than 800mm deep, 550mm length and 550mm width). Provision for control and power cabling should be made through plastic ducting. This product is guaranteed for 12 months (if installed and used correctly).



www.autopa.co.uk
+44 (0)1788 550556

AUTOPA Limited
Cottage Leap, Rugby, Warwickshire CV21 3XP

